

T.8N., R.2E., S.L.B.&M.

IN WEBER COUNTY

SCALE 1" = 2400'

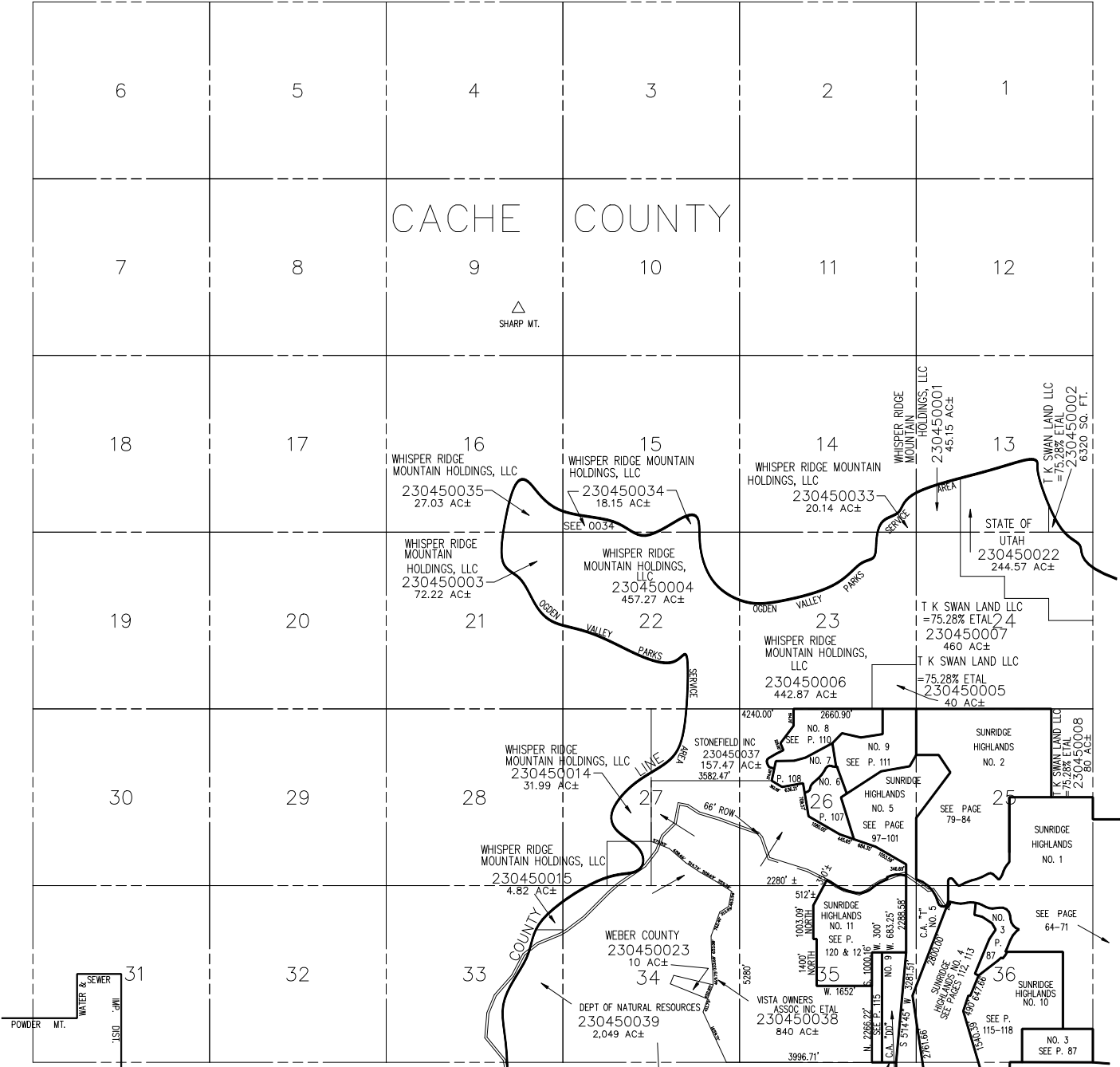
TAXING UNIT: 520

SEE PAGE 44

SEE PAGE 46

CACHE COUNTY

△
SHARP MT.



NOTE: WEBER/CACHE ASSESSMENT LINE CHANGED TO COUNTY LINE - 1995

SEE PAGE 12